



AboveEdge VP-0808 Intelligent VoIP Gateway with Built-In NAT Traversal and Proxy Server

AboveEdge VP series is a concise VoIP Switch. Besides its basic VoIP Gateway function, its greatest feature is its built-in Proxy and Relay, which can not only support registration and authentication for various CPE devices, but also can solve the problem of multi-net communication of CPE devices. AboveEdge VP can help the users upgrade their legacy PBX and make it support VoIP application in a short time, and realize expandable application of IP extensions.

The built-in IVR function and intelligent routing capabilities makes it an ideal product for businesses to fulfill leading telecommunications and business requirements without changing their dialing habits.

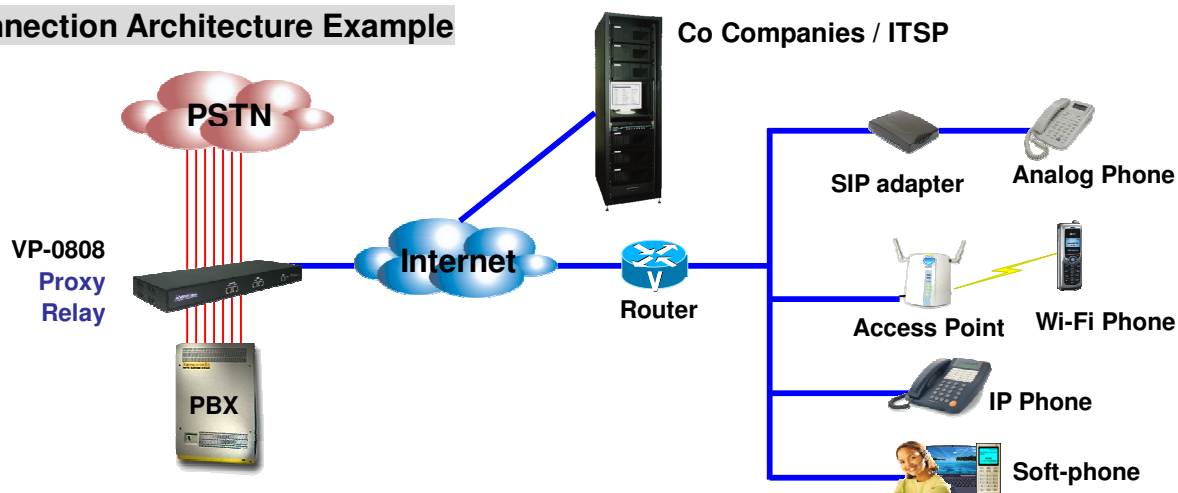
Main applications:

- Expand extensions without adding extension cards.
- Upgrade the PBX, providing VoIP features to legacy PBX.
- Support multi-net remote IP extension.
- Work with Co companies/ITSP for international calls and cell phone calls saving
- Work with TeleSynergy's TelePCX to extend PBX feature of TelePCX to remote site.

FEATURES

- ▶ Conforms to IETF latest SIP protocol RFC-3261
- ▶ With built-in Registrar Server, support user registration, authentication and call authorization
- ▶ With B2BUA, provide routing distribution and call control
- ▶ Support various SIP customer endpoints such as IP-Phone, Softphone, SIP adapter, Wi-Fi phone and VoIP Gateway, etc.
- ▶ Support multi-account and registration to multi-Proxy server.
- ▶ Support DNS inquiry for multi-ENUM server.
- ▶ Provide NAT traversal of CPE end; no troublesome setting for VoIP CPE. You can easily connect the network whether you are in WAN or LAN, fixed or dynamic IP environment.
- ▶ Intelligent Routing Management:
 - Backup route: second route alternative when the network is unconnected
 - Routing by time section: you can set a special routing for a special time
 - Route screen: according to inbound IP address or ANI, sift the group for special arrangement.
 - Route distribution: Routing by Answer Success Ratio (ASR) condition
- ▶ Call Incoming Management
 - Hotline mode
 - DNI/ANI re-dialing by dial tone or IVR
- ▶ Support E.164 coding mode
- ▶ Support IP-to-PSTN, PSTN-to-IP and IP-to-IP application
- ▶ T type architecture support "Trunk Bypass", when power off, FXO connect with FXS directly, remaining the usual communication of trunk.
- ▶ Support check caution affair through Syslog Server and call detail record (CDR)
- ▶ Support TeleSynergy Billing solution (optional), provide various billing solution, account information and call control
- ▶ Remote management through Web-base user port:
 - On-line system parameter modification
 - On-line system supervision and management
 - Firmware upgrade
- ▶ Support Caller ID identification (FXS: DTMF and FSK Caller ID generation / FXO: DTMF and FSK Caller ID detection)
- ▶ Support Polarity Reverse (FXS- generation / FXO- detection)
- ▶ Fax message auto-detection (support T.38 online fax protocol)
- ▶ Support QoS (IP TOS)
- ▶ Support 100 CPE user to sign in, and 50 On-line calls for one box
- ▶ Support 8 multi-net concurrent call for one box

Connection Architecture Example



VOICE SPECIFICATIONS

- ▶ Communication protocol
 - SIP (RFC 3261) compliant
 - SIP RFC2833 DTMF signaling
- ▶ Voice algorithms: ITU G.711 μ -law/A-law at 64kbps, G.723.1 at 5.3/6.3kbps, G.729A at 8kbps, auto codec negotiation
- ▶ Echo Cancellation: G.168-2000 compliant with 40ms echo tail length.
- ▶ VAD(Voice Activity Detection) & CNG(Comfort Noise Generation): G.723.1A for G.723.1, G.729B for G.729A
- ▶ Fax protocol: T.38 FAX relay supports Group III V.17, V.21, V.27ter, V.29, V.33 (2.4 to 14.4 Kbps)
- ▶ Quality Enhancement: Jitter Buffer and Programmable Gain Control
- ▶ Tone Generation and Detection: DTMF
- ▶ Call Progress Detection: Dial tone, Busy tone, Ring Back tone

GENERAL SPECIFICATIONS

- ▶ Power: AC 100V~240V, 50/60 Hz, 3A
- ▶ Operating Temperature: 0°C to 45°C
- ▶ Storage Temperature: -20°C to 75°C
- ▶ Humidity: 20% to 90% non-condensing
- ▶ Dimension: 438mm × 173mm × 44mm(W/D/H)

NETWORK SPECIFICATIONS

- ▶ Network interface: 1 Fast Ethernet port (10/100 Base-T) auto-detection
- ▶ Connector: RJ-45
- ▶ QoS: Support IP TOS (Type of Service)

HARDWARE SPECIFICATIONS

- ▶ Physical port number: 16 ports (8 FXO / 8 FXS)
- ▶ AbovEdge-VP-0808: 8 FXO / 8 FXS / 8 VoIP channel
- ▶ Trunk interface
 - Loop start
 - Loop voltage polarity reverse detection
 - Loop current: 20~80mA, Polarity insensitive
 - Impedance: 600 Ω nominal
 - Frequency response: 200~3400Hz
 - Ring detection: 30Vrms~140Vrms (16~68Hz)
 - Pulse dialing: 10/20 PPS, M/B ratio 33/66, 40/60 selectable
 - Caller ID receiving: Bellcore GR-30-CORE & DTMF
 - Ring detection: Onhook / offhook control
 - Connector: 2 port RJ-45
- ▶ Extension interface
 - Loop start
 - DC Supply: 50v (standby)
 - Loop current: 25mA
 - Frequency response: 200~3400Hz
 - Ringing: 44Vrms (20Hz) / 60mA
 - Caller ID generating: Bellcore GR-30-CORE / DTMF
 - Message light: Bellcore FSD 01-02-2000
 - Pickup/Hangup/Flash detection; Flash duration selection
 - Connector: 2 port RJ-45

SETUP AND MANAGEMENT

- ▶ Managing tool: Web Browser, Telnet and Console Port, SNMP, syslog
- ▶ Firmware upgrade: FTP / TFTP / Provision Server